

# Harvey Gulf



**JIMMY P. LAFONT**

**JANUARY 2014**

**Hull Diminution Survey  
Prepared for ABS Special Survey  
By**



**1-877-638-6841**

[www.nvindt.com](http://www.nvindt.com)

ABS Certificate No. 12-MC2231685-1



Certificate Number: 12-MC2231685-1

ABS Port Office: Morgan City

Date: 7 November 2012

Service Provider's address: 2449 West Park Ave. Fed Tax Id: 1117678, Gray, La 70359

Service Provider's Web Site [www.nvindt.com](http://www.nvindt.com)

Unless cancelled earlier, this certificate expires on 12 November 2015

For particulars regarding this recognition, see the ABS web site: [www.eagle.org](http://www.eagle.org)

## Certificate of Service Recognition

This is to Certify that

**NVI, L.L.C. DbA Nondestructive And Visual Inspection**

having been audited by ABS and having given a satisfactory practical demonstration of the service listed below, is recognized by ABS as a Service Provider to provide services which ABS Surveyors may rely on to make decisions affecting classification or statutory surveys.

### Hull Gauging Firms

It is the responsibility of the Service Provider to employ, train and qualify persons in the service provided. If the service requires approval from manufacturers, the service provider is responsible to maintain contact with the manufacturer and maintain any service manuals up to date. The employees who will conduct the servicing are to have photo identification and, if allowed, be listed on the company's web site (noted above). The products and models allowed to be serviced are to be listed on the company's web site. The ABS office issuing this certificate to be kept updated with changes to the management of the company, its employees, products and models on the list and any changes made.



John Preston, Surveyor



P.O. Box 1690 , Gray, LA 70359

TEL NO : (985)8765559

FAX NO : (985)8769355

Vessel Particulars

Ship's Name	<b>M/V JIMMY P. LAFONT</b>					
Dimensions	Length	68'	Breadth	24'	Depth	8.5
Ships Registry	NEW ORLEANS, LA					
Type of Vessel	TOWING VESSEL					
IMO Number	*					
Official Number	565687					
Call Sign:	WYT9490					
Hull Number	*					
Gross Tonnage	92					
Net Tonnage	74					
Classification Society	ABS A-1					
Date Built	1975					
Place Built	A E HINGLE INC					

Thickness Measurement Company certified by: ABS

Certificate No. 12-MC2231685-1

Certificate Date: 7th of November 2012 thru 12th November 2015

First date of measurement 13th of January 2014

Last date of measurement 13th of January 2014

Special Survey No. N/A

Details of Measurement equipment Olympus 38-DL +  
Serial # 100113212  
Qualification of Operator ASNT- TC 1A Level II

Report No: 6018263 Consisting of 1 Sheets

Name of Operator: JONATHAN ROSALES Name of Surveyor: \_\_\_\_\_

Signature of Operator: \_\_\_\_\_ Signature of Surveyor: \_\_\_\_\_  
Date: 1/13/2014 Date 1/13/2014



## ULTRASONIC THICKNESS INSPECTION TECHNIQUE

VESSEL NAME: M/V JIMMY P. LAFONT

Date: 1/13/2014

Thickness Unit Mfg	OLYMPUS
Model	38 DL +
Serial #	100113212
Calibrated on	2-22-13
Probe Frequency (Mhz)	5
Probe Mfg	PANAMETRIC
Model #	D-790
Serial #	678521
Type	
Calibration Block Material	STEEL
Serial #	09198
Calibration Thickness	.250/.500/.750/1"
Couplant	SONOTRACE
Method	UT
B-scan Index	
C-scan X-index (Horiz.)	
C-scan Y-index (Vert.)	
Technician & Certification	JONATHAN ROSALES, ASNT II
Supervisor & Certification	DON ADAMS, ASNT III

TABLE OF CONTENTS  
HARVEY GULF  
M/V JIMMY P. LAFONT

PAGE NO. AND FILE	DESCRIPTION
PAGE 01	BOTTOM PLATE, HULL IWO KEEL

# NONDESTRUCTIVE & VISUAL INSPECTION, LLC.

Date Of Survey: 01/13/14

HARVEY GULF

PAGE 1 OF 1

## Report on THICKNESS MEASUREMENTS

Vessel Name: JIMMY P. LAFONT

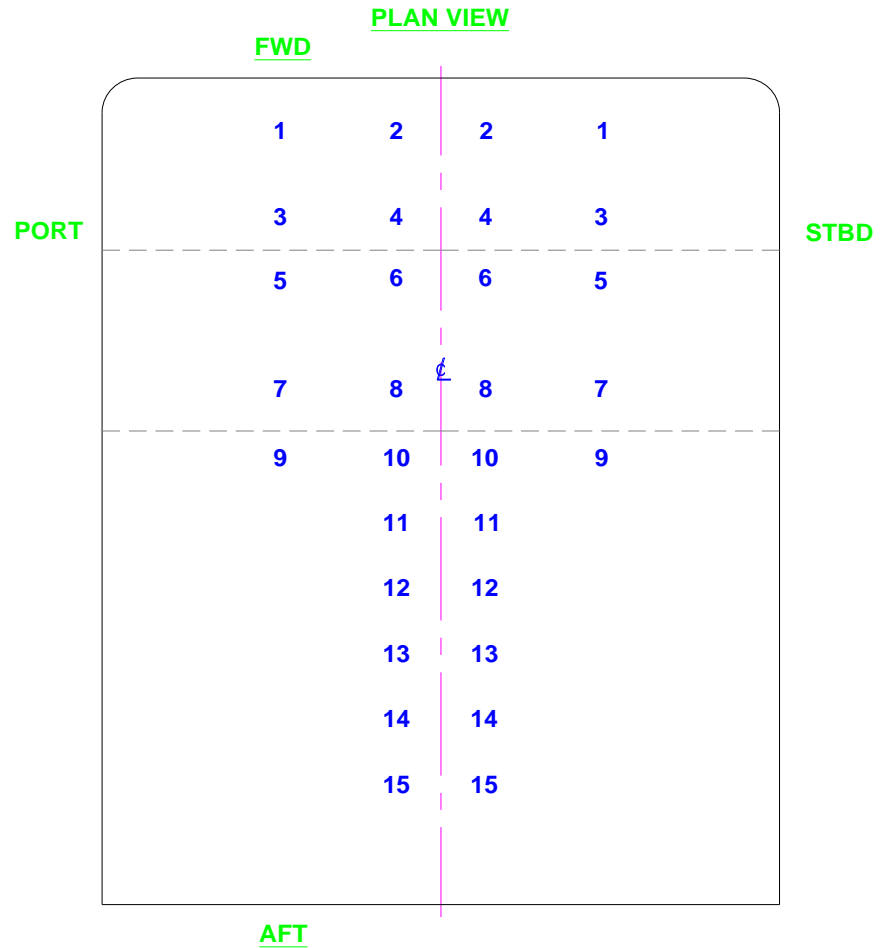
Class Identity No. Official No. 5656687; 68' L x 8.5' D x 24' Br

Report No. 6018263

STRUCTURAL MEMBER: BOTTOM PLATE

LOCATION OF STRUCTURE HULL IWO KEEL

DESCRIPTION	Org. Thk.	Maximum Allowable Diminution		Gauged		Diminution Port		Diminution Stbd	
		In	In %	Port	Stbd	In	%	In	%
POSITION 1	0.500	0.125	25%	0.492	0.507	0.008	1.6		
2	0.500	0.125	25%	0.500	0.481	0.000	0.0	0.019	3.8
3	0.500	0.125	25%	0.481	0.500	0.019	3.8	0.000	0.0
4	0.500	0.125	25%	0.485	0.492	0.015	3.0	0.008	1.6
5	0.375	0.094	25%	0.344	0.367	0.031	8.3	0.008	2.1
6	0.375	0.094	25%	0.364	0.328	0.011	2.9	0.047	12.5
7	0.375	0.094	25%	0.369	0.360	0.006	1.6	0.015	4.0
8	0.375	0.094	25%	0.355	0.368	0.020	5.3	0.007	1.9
9	0.375	0.094	25%	0.350	0.492	0.025	6.6		
10	0.500	0.125	25%	0.487	0.500	0.013	2.6	0.000	0.0
11	0.500	0.125	25%	0.476	0.480	0.024	4.8	0.020	4.0
12	0.500	0.125	25%	0.480	0.501	0.020	4.0		
13	0.500	0.125	25%	0.493	0.502	0.007	1.4		
14	0.500	0.125	25%	0.502	0.498			0.002	0.4
15	0.500	0.125	25%	0.489	0.500	0.011	2.2	0.000	0.0



Technician MARCOS ROSALES, ASNT II

NVI, LLC. ABS Listed No. MC1754912

Operator's Signature \_\_\_\_\_

ABS Surveyor's Signature \_\_\_\_\_